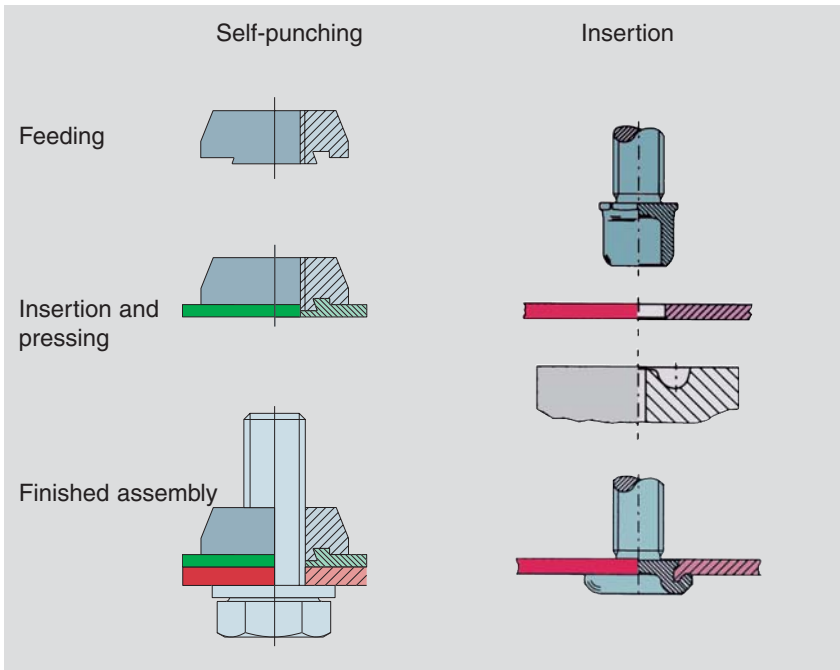


# TOX®-Fastener-Insertion

## Function elements



Working closely together with our system supplier, we can offer you a truly synergistic partnership with a complete system solution, which incorporates the latest technical features for optimum manufacturing. This assures both, top quality and low cost.

Data sheet 100.03

09/07

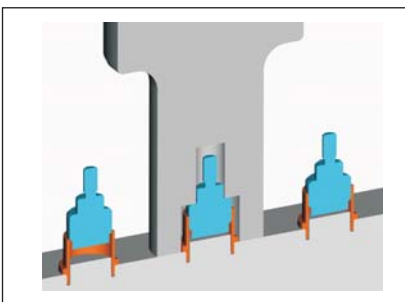


## Pressing the assembly

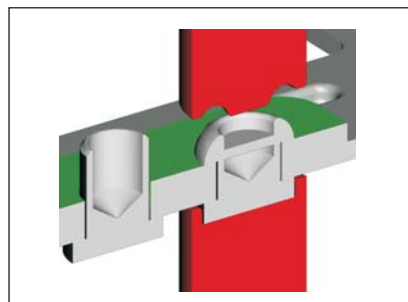


Many customers all over the world apply our TOX®-Powerpackage presses for precise joining of their pieceparts.

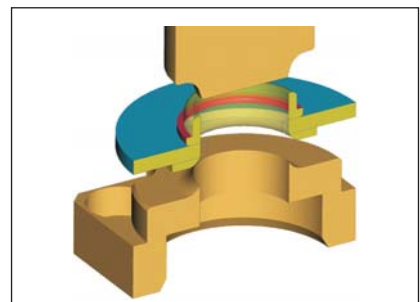
## Process examples:



Picture shows: Pressing a stud into a bushing



Picture shows: Riveting

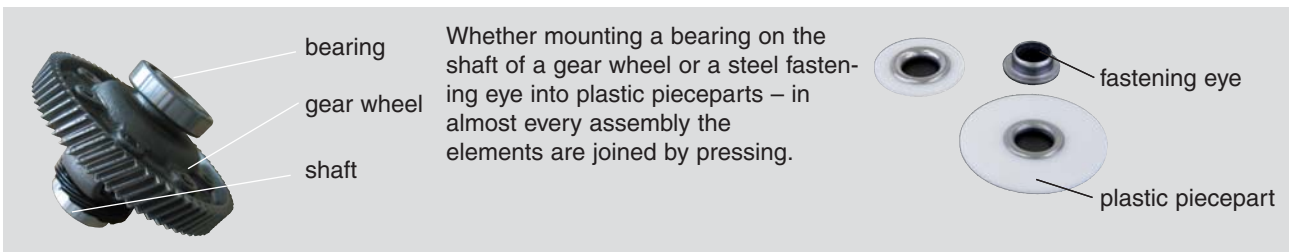


Picture shows: Flaring

# Applications and Equipment



Automobile industry is no longer imaginable without function elements.



True to our modular principle, we co-operate with renowned component manufacturers in order to offer you the complete machine for your plant.

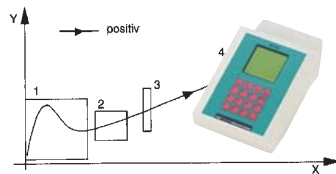
**Pierce head**



**Machine**



Quality and process assurance due to TOX® Pressing Monitoring



Just an example of numerous machine solution



**Singulator**

