

TOX®-Powerpackage Type BS, reliable and cost-effective series with 5 – 276 kN press force, at 6 bar air pressure fast approach stroke 50 – 200 mm, power stroke up to 12 mm

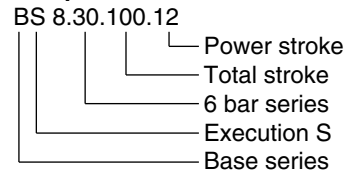


Any mounting orientation, vertical to horizontal, possible.

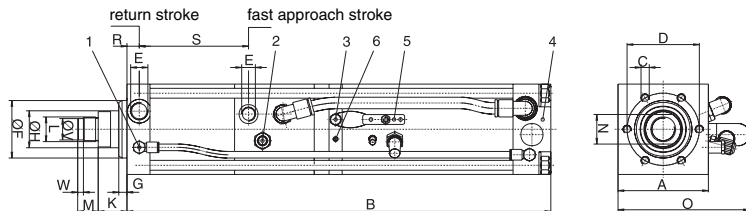
The pneumo-hydraulic drive cylinder BS is the base version of the very widespread TOX®-Powerpackage, of same quality but without power by-pass, end position damping and venting bore in the working piston. Mounting positions from vertical to horizontal are possible, see illustration. Cylinders of this standard series are delivered from stock.

The complete and comprehensive TOX®-Powerpackage cylinder and accessories program you will find in data sheet 10.00.

Sample order:



- 1 Flow Control X
- 2 High-pressure measuring hose
- 3 Oil filling nipple
- 4 Change over valve for fast approach stroke/power stroke
- 5 Venting plate
- 6 Oil level indicator



Accessories

e.g. anti-rotation lock, tool holding fixtures, pressure switches, etc. are described in data sheet 10.00 (TOX®-Powerpackage drive family).

Order No.	Total stroke Incl. power stroke	Pressing force at 6 bar kN	Fast approach force daN	Retracting force daN	A	B	C	D	E	Ff7	G	H	K	L	M	N	O	R	S	U	Vg6	W	*IV
BS 1. 50.12	5,6	69	74	50	434	6xM6x11	40	G1/8	30	10	16	24	M12x1,5	12	14	73	11,5	106,5	-	-	-	x	
BS 1. 100.12	5,6	69	74	50	565	6xM6x11	40	G1/8	30	10	16	24	M12x1,5	12	14	73	11,5	156,5	-	-	-	x	
BS 2.30. 50.12	17	140	150	70	563	6xM8x12	54	G1/4	40	10	20	26	M16x1,5	15	17	102	13	116	-	-	-	x	
BS 2.30.100.12	17	140	150	70	678	6xM8x12	54	G1/4	40	10	20	26	M16x1,5	15	17	102	13	166	-	-	-	x	
BS 4.30. 50.12	31	180	195	85	656	6xM8x15	64	G3/8	50	10	30	28,5	M22x2	20	24	116	41	125	-	18	7	x	
BS 4.30.100.12	31	180	195	85	771	6xM8x15	64	G3/8	50	10	30	28,5	M22x2	20	24	116	4	175	-	18	7	x	
BS 8.30. 50.12	74	320	330	110	784	6xM10x16	88	G1/2	70	10	45	35	M30x2	25	36	165	15	133	-	26	7	x	
BS 8.30.100.12	74	320	330	110	913	6xM10x16	88	G1/2	70	10	45	35	M30x2	25	36	165	15	183	-	26	7	x	
BS 8.30.200.12	74	320	330	110	1163	6xM10x16	88	G1/2	70	10	45	35	M30x2	25	36	165	15	283	-	26	7	x	
BS15.30. 50.10	134	450	540	135	811	6xM16x25	100	G1/2	75	15	50	36	M30x2	25	41	190	17,5	134,5	-	26	7	x	
BS15.30.100.12	134	450	540	135	976	6xM16x25	100	G1/2	75	15	50	36	M30x2	25	41	190	17,5	184,5	-	26	7	x	
BS15.30.200.12	134	450	540	135	1273	6xM16x25	100	G1/2	75	15	50	36	M30x2	25	41	190	17,5	284,5	-	26	7	x	
BS30.30. 70.10	276	660	930	170	1077	6xM20x30	132	G3/4	100	18	56	47	M39x2	35	50	290	20	206	22	-	-	-	
BS30.30.150.12	276	660	930	170	1324	6xM20x30	132	G3/4	100	18	56	47	M39x2	35	50	290	20	286	22	-	-	-	
BS30.30.200.12	276	660	930	170	1449	6xM20x30	132	G3/4	100	18	56	47	M39x2	35	50	290	20	336	22	-	-	-	

*IV: Integrated valve